

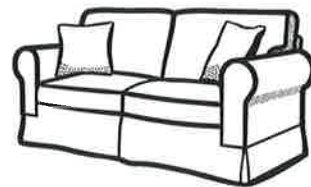


Eelūnaapéewi Lahkéewiit

Wiingu-néewEénda-Lunaapeewáhkiing -Welcome to the land of the Delaware's

FREE

**Black Leather Couch
Good Condition
First come First Service
22469 Knoll Road—Unit #1**



Special Thanks to ELC and Health Centre for providing us with meals, groceries and summer kits. They are very much appreciated.

Anúshiik, Siikwan, Jaden & Karran Jacobs,

YARD SALE



TACO SALE

Saturday August 22, 2020

1:00—4:00

Home of Siikwan & Jaden Jacobs

Everything 25¢ or 2 for 25¢

Indian Taco—\$7.00

Pop & Water—\$1.00

Freezes—\$1.00

Text ahead for orders

226-626-8567 or

call ahead @ 519-692-3188

News Items Due:

Monday August 31st, 2020 @ 4:00 pm

Next Publication Distributed:

Wednesday, September 2nd, 2020



For more news and information check out our website
www.delawarenation.on.ca

Eelūnaapéewi Lahkéewiit

(Delaware Nation)

SPECIAL NOTICE

Outstanding Water Accounts

Upon review of our water accounts, it is noted that we have some Eelūnaapéewi Lahkéewiit water accounts that are in arrears.

Please contact the Eelūnaapéewi Lahkéewiit Finance Department to make payment - 519-692-3936.

Failure to resolve these accounts will result in the disconnection of your water service.

Water payments assist in the ongoing water service and water delivery to the homes and businesses of the Eelūnaapéewi Lahkéewiit Community.

Anushiik for your Co-operation

Oneida Style Corn Soup Sale

Thursday August 20th

11:30am until sold out



\$5 bowl
\$1 fry bread
\$1 pop
(Pepsi/Diet
Pepsi/Water)
\$1 Delivery



Cindy's House
22235 Lunaapeew Rd
(519) 692-9819 to order

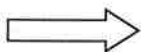


Dear Parents or Legal Guardians,

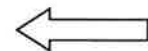
Due to the current restrictions in place due to Covid-19, we regret to inform you that we are unable to host our Annual Back to School BBQ. The Eelūnaapéewi Lahkéewiit Planning Committee will be providing school supplies to eligible families that meet the requirements. If your child(ren) are Eelūnaapéewi Lahkéewiit Band Members **OR** an approved residency permit holder within the community, you are eligible for this program. Applications will be accepted until **AUGUST 28, 2020** and can be submitted to Amanda Logan at the Administration Office.

911 Address: _____

Child's Name: _____	Grade in September: _____
Age as of September 8, 2020: _____	School: _____
Child's Name: _____	Grade in September: _____
Age as of September 8, 2020: _____	School: _____
Child's Name: _____	Grade in September: _____
Age as of September 8, 2020: _____	School: _____
Child's Name: _____	Grade in September: _____
Age as of September 8, 2020: _____	School: _____



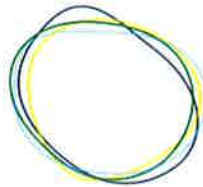
Flyer with Supply Pick-up date and location to follow



Tim Hortons®

We are currently hiring for full time day positions within our organization. We currently have Counter Staff and Baker positions available. Please submit your resume to Kaster Huff by September 2nd 2020. Please note, only qualified candidates will be contacted for an interview.

Thank You



**FEDERAL
INDIAN DAY
SCHOOL
CLASS ACTION**

Indian Day Schools Claims Assistance Program Update

Federal Indian School Class Action
Questions?

Claims Administrator: 1 800-221-2898

Class Counsel: 1 844-539-3815

Dear Delaware,

Thank you for your recent request, submitted on behalf of your community. An Indian Day Schools Claims Assistance Program is currently being developed by Argyle Communications Inc. to provide in-person support in communities across the country to help Claimants complete their claim form.

There will be a limited number of sessions delivered, so the Indian Day Schools Claims Assistance Team is currently reviewing requests and developing a plan to safely and effectively reach as many claimants as possible.

Please note that while the Program is being developed, Class Counsel (Class Counsel) is still providing legal support by phone at 1-844-539-3815.

Sincerely,

Class Counsel



**FEDERAL
INDIAN DAY
SCHOOL
CLASS ACTION**

**Visit our website for more
information!**

Day School Settlement Implementation Lead
Cam Cameron, Partner
Cam.Cameron@gowlingwlg.com
T/Tél. +1 613 786 8650

Ēendu Akehkiimúnjiik (Kindergarten) News

Welcome back!

The Kindergarten staff would like to take this opportunity to welcome everyone back to school! At this time we are awaiting Council's decision as to a return to school date however, until we hear a confirmed date we are preparing for a September 8th start date. With this in mind, I am scheduling a final registration date of **Wednesday, August 26th for the 2020-2021 school year**. If you have not yet registered your child for Junior or Senior Kindergarten, please call the school to **book registration** time for this date.

We are working presently on making adjustments to the Kindergarten to ensure the safety of the students and the staff. We would be pleased to discuss these preparations with any parent/guardian who has questions or concerns.



Kindergarten Back to School Supplies

The supplies will be available for pick up at the Kindergarten on Thursday, August 27th, 2020 between 9 am to 4pm.

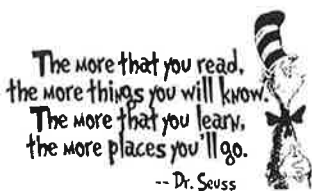
All band member with children who will be starting Kindergarten within the LKDSB district are eligible to pick up these school supplies. Please adhere to social distancing rules when entering the Kindergarten, as only one adult and the student are allowed at a time may enter the building. Feel free to call the school if you have questions about this event at 519-692-4398.

If your are unable to make this date please call to make alternative arrangements.

I sincerely hope all families are staying safe and are excited about the prospect of returning to school this fall.

Sincerely,

Angela Johnson



Eelūnaapéewi Lahkéewiit
Education Department News
August 18, 2020

As many of you are aware, on July 30, the Ministry of Education announced that with guidance from public health, determined that elementary and secondary schools (Kindergarten to Grade 12) will reopen with in-person delivery of teaching and instruction with enhanced health and safety protocols.

What this means to you...

1) **In-Class or Remote Learning**

As a parent/caregiver, you will need to decide if you will be sending your child(ren) to attend school, beginning Tuesday, September 8.

- Parents have the option of sending their child to school or to participate in remote learning. Beginning July 31 a link was emailed to families of registered children requesting their preference. Further, automated phone calls will continue throughout from July 31 to August 6. **If you did not receive an email and/or phone call, you will need to contact your child's school (Naahii 674-3173, RDHS 674-5449) and leave a message with which option you choose.**
- ***Note: After August 28 there will be limited opportunities within the school year for parents to switch their child's school experience from electronic to face-to-face instruction. Families must notify the school in advance and there will be a waiting period prior to their child's admission to school, depending on scheduling and availability of classroom space.***

2) **In-Class**

The school year will begin on Tuesday, September 8 with enhanced public health protocols (including screening, hand washing/sanitizing, and contact tracing). Students will stay with the same class (cohort) throughout the school day (including class time, lunch, and recess). All students will attend school each day. Students K-3 will be encouraged to wear a mask, but it is not required. Students grades 4-12 will be required to wear a mask.

3) **Remote Learning**
Elementary

Learn at home requires daily attendance, 300 minutes of student learning each day, includes all curriculum areas, and frequent, live contact with a teacher during school hours. Student attendance will be taken daily. Families will be contacted in the case of an unreported absence to ensure child's safety and well-being.

Student learning daily minimum of learning time by grade level:

Kindergarten will have 180 minutes of live (or synchronous) learning each day. As well as 120 minutes of on-demand (or asynchronous) learning each day.

Grade 1-8 will have 225 minutes or 3.75 hours of live (or synchronous) learning each day. As well as 35 minutes of on-demand (or asynchronous) learning each day.

Students will have frequent, live contact with their teacher. Live (or synchronous) learning will include text, video, or voice communication that allows teachers to instruct and connect students in real time. Live learning supports the well being and academic achievement of students with immediate feedback from teachers and student to student interaction. Live learning will include whole class, small group, and individual interactions.

On-demand or (asynchronous) learning is not delivered in real time. It may include watching pre-recorded video lessons, completing assigned tasks, or contributing to online discussion boards.

Students will learn at home using LKDSB provided platforms:

Seesaw (Kindergarten-Grade 6)

Google Classroom (Grade 4-8)

Google Meet Video Conferencing (Kindergarten-Grade 8)

LKDSB will assess whether there are students who need access to a device or Internet and take steps to distribute school resources to ensure students can stay connected, wherever possible, to learning.

There will be limited opportunities throughout the school year to return to face to face learning if you chose for your child to begin the school year in the Learn at Home model. Students and families may be put on a waitlist for face to face learning, depending on availability.

Secondary: Grade 9-12

Students who choose to Learn at Home will be engaged in remote learning five days per week. Students will not enter the school premises during the time they are engaged in Learn at Home. Learn at Home will operate in quadesters. Students who choose Learn at Home will be enrolled in D2L Brightspace or Google Classroom. They will be registered in two classes per quadester with students and teachers from throughout the LKDSB. Students who choose Learn at Home may not have the same timetable or course selections they requested in the spring. All attempts will be made to honor student courses requests; however, the priority for Learn at Home will be to provide compulsory courses. As such, there will be limited optional courses available in the Learn at Home Program.

During Learn at Home, students will engage in a combination of asynchronous and synchronous (during school hours) learning to achieve the 110 hours of instruction per course. Students will be expected to log in to their Learn at Home classes every day. Attendance will be taken daily.

Students and parents will be provided with a daily schedule or timetable that includes 150 minutes of learning opportunities per course, with a combination of synchronous and asynchronous learning activities. Programming will be based on the full Ontario Curriculum and include opportunities for guided instruction, large and small group learning, synchronous check-ins, and asynchronous independent work.

New Student Registration

If you have not registered your child yet for school, we can assist you with doing that or you can do so directly at www.lkdsb.net

Postsecondary

All applications have been received for the Fall 2020 intake. If you wish to apply for a winter postsecondary program, the deadline for applications is October 1. Applications are available online at: www.delawarenation.on.ca or one can be picked up at the Education Office.

Orientation for newly-approved students will take place virtually via Zoom on August 21, 2020. This is a mandatory requirement.

School Supplies

We will be part of the planning for the back to school supplies. This year will be different in that we will not be having a large event as before; however, families will be notified of pick up times and dates. Please refer to information provided by Stepping Stones.

Release of Information Forms

The 2020-2021 Release forms will go out early this year, so our parents have to time to fill it out and drop it off at the office before the new school year begins. These forms help us access information for our students so that we can better attend to their needs. Please ensure that the person that is in care of the child fills out and signs the form. While it is helpful for a relative to complete and sign these forms, we will not be able to advocate on a child's behalf if the form isn't signed by the parent or guardian. **Release of Information Forms Attached.**

Student Summer Fun Packs

We still have some left if you haven't picked up yours. Please call ahead or email to set up a time to pick up one. Or if you wish to have one delivered also let us know:

519-692-5551 or email: Jolene at education.manager@delawarenation.on.ca or Andrea at Andrea.Tobias@delawarenation.on.ca

Get Support for Families:

Until August 31, 2020, parents can apply for one-time funding to offset the cost of buying materials to support their children's learning, while they practice self-isolation and physical distancing. This funding can help parents with the costs of work books, educational apps, educational subscription services, movies and other tools to support learning at home. **Please see attached "Ontario Get Support for Families" pages on Eligibility Requirements and on how to apply.**



Eelūnaapéewi Lahkéewiit Education Department
14753 School House Line Thamesville, ON

www.delawarenation.on.ca

T - 519-692-5551

F - 519-692-5951



DELAWARE NATION COUNCIL

Moravian of the Thames Band

EDUCATION

Phone: 519.692.5551
Fax: 519.692.5951

14753 School House Line
Thamesville, ON N0P 2K0

2020- 2021 Release of Information

I, _____
(Parent/Guardian name or student name if over 18)

Hereby authorize and consent to the collection, use, disclosure, transmittal or examination of records or information and the exchange of verbal and/or written information between the Eelūnaapéewi Lahkéewiit Education Department personnel and

(School Name)

for the following student:

(Student's full name)

1. I understand that the type of data collected, used or disclosed, in any form, will consist of information, included but not limited to, registration information, attendance records, grades, student incentives, Individual Education Plans, secondary student schedules, Special Education reports such as clinical reports and/or psychological assessments.
2. I understand that the information will be used for the purpose of assisting the student achieve success and to ensure that the student received quality education services including education instruction appropriate for their learning style.
3. I understand that a copy of any information obtained will be stored in a secure location within a student folder at the Eelūnaapéewi Lahkéewiit Education Department office.
4. I understand that no information collected hereunder will be disclosed to any other agency without written consent.
5. I hereby acknowledge and agree that I will have no claim against the Eelūnaapéewi Lahkéewiit Council and staff for information collected, used or disclosed in accordance with this consent.
6. I agree that this consent is valid from **August 1, 2020** until **August 31, 2021** and can be revoked by the undersigned in writing at any time.
7. This signed consent allows the named student to access the Student Success Program offered through the Education Department such as student incentives, attendance awards, Awards Banquet, field trips and lunch/snack programs.

(Signature of Parent/Guardian/Student 18+)

Date

**Eelūnaapéewi Lahkéwiit – Moravian of the Thames
Education Department**

Student Information Form

Student's Name:

School Name:

Grade:

Date of Birth:

911 Address:

First Nation:

Band #:

Parent/Guardian:

Phone #:

Email:

Emergency Information

Name:

Phone #:

Name:

Phone #:

Medical Information

List Any Allergies:

Special Conditions (any health conditions that we should be made aware of?):

COVID-19: Get the [latest updates](#) or take a [self-assessment](#).



Get support for families

Learn about funding that families can apply for if they have children who are not in school or child care because of coronavirus (COVID-19). Find out if you are eligible and how to apply.

About Support for Families

The deadline for the Support for Families program is August 31, 2020 at midnight EST. We will process all applications that we receive before the deadline.

Until August 31, 2020, parents can apply for direct one-time funding to offset the cost of buying materials to support their children's learning, while they practice self-isolation and physical distancing.

Eligible parents will receive a one-time payment, per child, of:

- \$200 for children aged 0 to 12
- \$250 for children or youth aged 0 to 21 with special needs

This funding can help parents with the costs of work books, educational apps, educational subscription services, movies and other tools to support learning at home.

Parents refers to parents, guardians, and caregivers.

Eligibility

There is no income cap on this program. All parents are eligible if you have a child who is:

- aged 0 to 12
- aged 0 to 21 with special needs

If you have more than one child, you must **submit one application per child**.

Before you apply, please note:

- only one parent can apply for each child
- the parent who applies should have custody of the child

Apply

Step 1: gather the required information

To complete the application, you will need:

- the name of your child's school and school board (if applicable)
- your child's date of birth
- your banking information, if you are requesting payment by direct deposit
- a valid email address

Step 2: complete the application

Applications can only be submitted online. All applications must be submitted before the deadline on August 31, 2020 at midnight EST.

[Apply online now \(https://www.iaccess.gov.on.ca/FamilyAppWeb/public/index.xhtml\)](https://www.iaccess.gov.on.ca/FamilyAppWeb/public/index.xhtml)

Step 3: confirmation

After you submit your application, you will receive an:

- email confirmation
- application reference number

We may contact you to verify the information you provided through this application.

Get your payment

When applying you may select:

- direct deposit
- e-transfer
- cheque

Payment by direct deposit

We will make payments by direct deposit using the banking information you provide in your application form.

Please review the address and banking information entered to ensure they are correct. If you enter incorrect or invalid banking information, your payment could be delayed or you could receive your payment by cheque.

Payment by e-transfer

To receive a payment, you must have a bank account with [a participating financial institution \(https://www.interac.ca/en/consumers/products/interac-e-transfer/\)](https://www.interac.ca/en/consumers/products/interac-e-transfer/).

If you select e-transfer, you will receive two emails when your payment is ready.

The first email will:

- notify you that you will receive an email with your payment link
- provide instructions on how to answer the security question contained in your payment link

The second email will contain the payment link so you can:

- answer the security question
- deposit the payment into your bank account

Payment by cheque

We will send the cheque to the address on your application form. Please check to make sure the address you enter is correct.

After you apply, it may take us several weeks to process and deliver your cheque.

Get help

We are here to help.

Call us at:

Toll-free: 1-888-444-3770

Toll-free TTY: 1-800-268-7095

Email us at [supportforfamilies@ontario.ca \(mailto:supportforfamilies@ontario.ca\)](mailto:supportforfamilies@ontario.ca)

Updated: August 13, 2020

Published: April 5, 2020

Related

[Learn about coronavirus in Ontario \(https://covid-19.ontario.ca/\)](https://covid-19.ontario.ca/)

[Resources to learn at home \(https://www.ontario.ca/page/learn-at-home\)](https://www.ontario.ca/page/learn-at-home)

[Get emergency child care for health care and frontline staff \(https://www.ontario.ca/page/child-care-health-care-and-frontline-staff\)](https://www.ontario.ca/page/child-care-health-care-and-frontline-staff)

Eelūnaapéewi Lahkéewiit Health Centre



6 WEEK WALKING PROGRAM

Social Distancing Walking Program

I hope everyone is staying safe! I am starting a Another Walking program. I hope we have **NEW** people to join our walking program. I am going to count by MINUTES not steps! I will hand out calendars and I would like them handed in every 2 weeks! Starting August 17 to September 28, 2020. Our first two-week hand in will be August 31(Correction). Looking forward to the Cool Team names and all participates. I am encouraging social distance to keep our families safe.

Walk and Stay Safe Everyone!!

SOCIAL DISTANCING
FUN WITH FAMILY
OR FRIENDS!

FAMILIES LARGE
AND SMALL

6 WEEK PROGRAM

INCENTIVES AND
PRIZES

WALKING OR
RUNNING

EELŪNAAPÉEWI
LAHKÉEWIIT
14737 Schoolhouse
line
Thamesville, ON
N0P 2K0
519-692-3969
Norma Logan
CHR



6 Week Walking Program Calendar

Team Name _____

Start Date _____

Event Time _____

Team Players	Monday	Tuesday	Wednesday	Thursday	Friday	Saturday	Sunday

Eelūnaapéewi Lahkéewiit Health Centre

Norma Logan
CHR

Any questions or need another Calendar call:
519-692-3969





6 Week Walking Program Calendar

Team Name _____

Start Date _____

Event Time _____

Team Players	Monday	Tuesday	Wednesday	Thursday	Friday	Saturday	Sunday

Eelūnaapéwi Lahkéwiit Health Centre

Norma Logan
CHR

Any questions or need another Calendar call:
519-692-3969



Eelūnaapéewi Lahkéewiit



Family Fun while Social Distancing

We are doing registration for the **Scavenger Hunt** that will be held on **August 28 and 29**. This will be a great activity for the family! Please come and have fun with the family on your scheduled day, Golf Carts, Gifts will be handed out, drive thru lunch will be served!!

Registration Date: Aug 20th and 21st

End of Registration: Aug 24th @ 12:00 p.m.

Call Health Centre and leave names with

Norma Logan (CHR)

519-692-3969

YOUTH DIY KITS

**CONTACT THE DN HEALTH CENTRE
TO SIGN UP BY AUGUST 26th**

CAKE DECORATING KIT

**ONE KIT PER FAMILY
PICK UP AT THE DN HEALTH CENTRE**

**Aug. 27th
2PM-4PM**

PAINT KIT

**ONE CANVAS KIT PER CHILD
PICK UP AT THE DN HEALTH CENTRE**

**SEPT. 3rd
2pm-4pm**

**FOR MORE INFO CONTACT THE DN HEALTH
CENTRE @ 519-692-3969**



CAR SEAT INSTALL CLINIC

MONDAY, AUGUST 31ST, 2020

2:00 PM – 4:00 PM

DELAWARE NATION HEALTH CENTRE
(PARKING LOT)

****PLEASE BRING YOUR CAR SEATS TO ENSURE THEY ARE PROPERLY INSTALLED BY THE CAR SEAT INSTALL TECHNICIANS****

**4 APPOINTMENTS AVAILABLE
PLEASE CALL HEALTH CENTRE TO REGISTER @ 519-692-3969**

HOME SAFETY KIT

****INCLUDES A SMOKE ALARM, CARBON MONOXIDE ALARM, 2.5 LB. FIRE EXTINGUISHER****

**DELAWARE NATION BAND MEMBERS
1 KIT PER HOME OWNER**

**IF YOU ARE INTERESTED IN A KIT PLEASE
SIGN UP BY
MONDAY, SEPTEMBER 11TH, 2020
IN PARTNERSHIP WITH HOUSING AND
LANDS DEPT.**

**CALL HEALTH CENTRE TO
REGISTER @ 519-692-3969**



Eelünaapéewi Lahkéewiit Health Centre



Baked Goods Giveaway!

Where: Health Centre

When: Friday Aug 21, 2020

Time: 11:30 a.m. till gone!

Our summer students are making some baked goods, for our community to have for free. If you would like a sweet treat come up and see what kind of baked goods you would like.

See you there!

Norma Logan
CHR
519-692-3969



FOOD BANK

Thursday, September 10, 2020

1:30PM - 4:00PM

Delaware Nation Community
Centre

*****JUST A REMINDER - FOODBANK
MUST BE PICKED UP ON THURSDAY,
UNLESS OTHER ARRANGEMENTS
HAVE BEEN MADE BY CALLING THE
DELAWARE NATION HEALTH
CENTRE AT 519-692-3969*****



GOLF INFORMATION LEAGUE

Please arrive 20 minutes prior to your
tee time

To book a tee time:

Text: 519-495-3432

Call: 519-693-4921

Email: wgc.tee@gmail.com

****Please hand in your scores weekly with the dates/
names if you would like them tracked****

****Just a reminder- If you did not register for the golf
league than the golf fees are at your own cost****

THIS IS A COMMUNITY/FAMILY EVENT

PLEASE BE RESPONSIBLE

Free Soup and Sandwich Day!!!!



When: Tuesday, September 15th, 2020

Where: Health Centre

Time: 11:30am-2:00pm (or until supplies run out.)

“PICK-UP ONLY”

Any questions please call (519) 692-3969



Free Canned goods available.

**4 sleeves of frozen hamburger
to give away.**

First come, First serve.

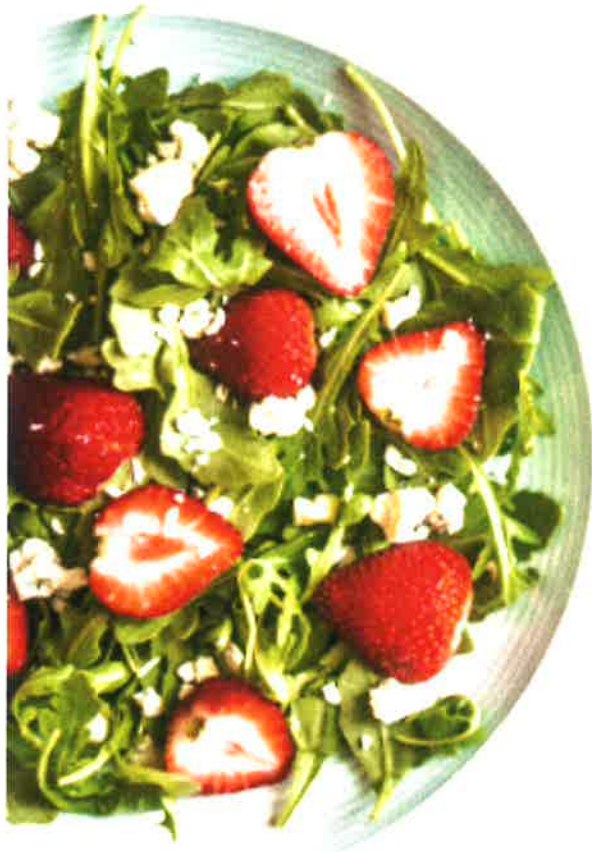
Please call ahead. (519) 692-3969

Delaware Nation Health Centre

SUMMER MEAL

*& Healthcare
Information Package*

For
Seniors
60+



Deliveries will
begin @11am
Wednesday,
August 23rd,
2020

If you are a senior 60+ you
MUST call the Health Centre and
leave your name and address in
order to receive a meal/package.

Please call and register by
Monday, August 21st, 2020

@ (519) 692-3969

AIAI Elders Gathering Virtual Powwow

With MC Gordon Sands & The Eagle Flight Singers



August 26th, 2020 @ 10am

Join us online for our Virtual Powwow with singing dancing and more! Experience it all from home!

For more information and to register as a dancer

Contact Shayna Phillips at sPhillips@aiai.on.ca

No later than Aug 21st by 4pm

All dancers will be given an honorarium



WARM LINE

Mental Health Network of CK

CALL (519) 351-3140

Starting Date: August 3rd, 2020
Monday - Friday, 9:00 am - 4:00 pm

Are you feeling lonely, isolated, anxious, depressed or in need of a friendly ear? Do you need help problem solving or to find resources available in Chatham-Kent? Call a Warm Line peer support worker. We are here to help!

The Warm Line is a non-crisis telephone support service. The goals of the Warm Line are to provide pre-crisis telephone support; to help people in a situation before a crisis results.

If you are in crisis call 1-866-299-7447, 911, or go to your nearest Hospital.



United Way
Chatham-Kent



CHATHAM KENT
COMMUNITY
FOUNDATION



www.mhnck.com

We Are Here to Help

Free 2B Me!

Are you between the ages of 16 and 30?

Do you identify as LGBT2SQIA+ or are you an ally to this community?

Join our virtual Free 2B Me gatherings!

Hope House welcomes you to weekly Zoom meetings where you'll find friends, fun, support, and a safe, non judgmental space to be yourself and discuss the issues that matter most to you!

Join us every Thursday from 6:00–7:00pm

Expect many learning opportunities and exciting activities focused on LGBT2SQIA+ relevant topics, maintaining wellness, and having fun!

Email sam@mhnc.com for a link to the Zoom meeting room where this private group will be held, or if you just need to talk to someone who understands.

71 Raleigh St.
Chatham, ON.
N7M 2M9

www.mhnc.com



Follow Us Online!

Instagram: @hope_house_lgbtq



Questions?

Contact Sam at

519-351-3100

or sam@mhnc.com



IDHC Short Film Festival

How DIABETES AFFECTS INDIGENOUS COMMUNITY

REZTORE PRIDE 3 VIDEO CONTEST

**ANNOUNCING THE MOST EXCITING
VIDEO CONTEST FOR THE
SUMMER OF 2020!**



Participants will create a short video between 3 minutes and 5 minutes that addresses Diabetes from an Indigenous perspective using their mobile device and favourite video editing software. All videos will be showcased during an online Zoom Film Festival presentation on Friday September 4th, 2020.

- Rules and Registration: <https://soadi.wufoo.com/forms/reztore-pride-3-short-film-festival-registration>
- Video Submission: <https://www.dropbox.com/request/jzu7Y8klvCR0NltipmAg>
- Technical Support: <https://discord.gg/nbcyzDv>

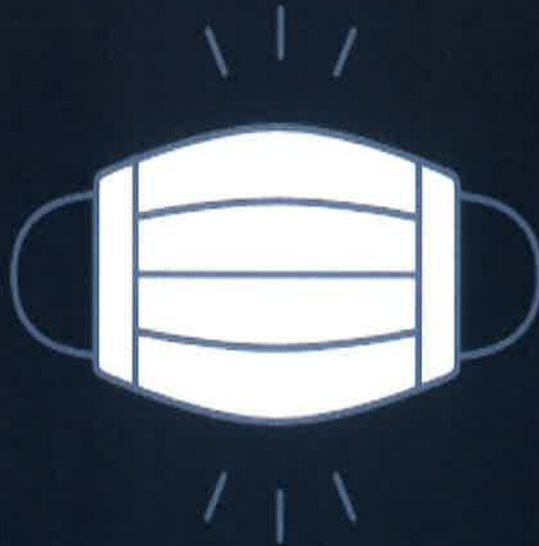
Find Contest rules on Wufoo Registration Link.

Deadline for Video Submission: **Friday, August 28, 2020. 11:59 p.m.**

Videos will be judged on the following criteria: **Creativity, Content, Message and Originality.**

- **First Prize \$500 + Visa Gift Card**
- **Second Prize \$250 + Visa Gift Card**
- **Prizes for all**

Face Covering Required as of Friday, August 14



All persons entering an indoor public space in Chatham-Kent must wear a mask that covers the nose, mouth, and chin as required under Municipal By-law 101-2020.

Please ensure that you continue to physically distance (2 metres) from others, and practice healthy hand hygiene.



Norma Logan

C.H.R

519-692-3969



Employment Opportunity

The Southern First Nations Secretariat is now accepting applications for the position of:

ADMINISTRATIVE ASSISTANT (MENTORED WORK)

- Eligible participants are aged 15 to 30 inclusively.
- Mentored work placements are for youth who reside on reserve, are not in school, are unemployed or underemployed.

POSITION REPORTS TO: Executive Assistant

WAGE/HOURS: \$15/hour 37.5 hours per week

POSITION SUMMARY:

Under direct supervision of the Executive Assistant, the Administrative Assistant - Mentored Worker will be responsible for assisting with daily administrative duties of the Administration department.

DUTIES & RESPONSIBILITIES:

- Provide general clerical duties for the Administration department including reception, filing, photocopying, typing, and faxing.
- Coordinate meeting venues, preparation of meeting materials, and recording minutes as required.
- Assist with website and social media updates and marketing.
- Assist with obtaining relevant information for the SFNS Bi-Monthly Newsletter.
- Assist with planning special events as required.
- Provide other clerical/administrative duties as required.

QUALIFICATIONS:

- Previous work experience within a First Nation community/organization preferred.
- Previous administrative work experience preferred.
- Computer skills (i.e. Microsoft Office - Word, Excel, Outlook).
- Must have the ability to work independently or in a team environment.
- Strong oral and written communication skills.
- **Applicants must be between the ages of 15-30 years of age, not in school, unemployed or underemployed.**
- Must have access to reliable transportation.



Closing Date: Monday, August 31, 2020 @ 4:00 p.m.

Interviews are tentatively scheduled for Friday, September 4, 2020

Length of Position:

29 Weeks

(September 8, 2020 – March 31, 2021)

Based on funding available. Start date is subject to change.

Please submit via email a cover letter, resume, and three current written employment and/or character references to:

Lori Fisher, Executive Assistant
Southern First Nations Secretariat
22361 Austin Line
Bothwell, ON N0P 1C0
Email: exec.assistant@sfns.on.ca

Please clearly mark your subject line:

"Confidential - Mentored Work – Administrative Assistant"

Please ensure to include your contact information including phone number and email address in your cover letter/resume.

We thank all applicants for their interest, however, only those selected for an interview will be contacted.

Student Job Posting
for a
Youth Job Coordinator

Responsibilities

The youth will assist to create and implement a program for youth who have developmental disabilities. This will be done using a person centered approach, that looks for opportunities for youth with developmental disabilities to have the same experience as all youth in the community. These opportunities could be to volunteer, have recreational options or to find a job. This could include virtual activities, job coaching or being a mentor to youth who have a developmental disability.

Post secondary students who are interested in job experience in the field of social services, developmental services or other community services would be good candidates for this position.

Duration: 16 weeks (Start date: September 8, 2020)

2 positions available

30 hrs/week

Rate: \$15.00 per hour

Please apply to: Jeff Giles
Quad County Support Services
P. O. Box 65
Wardsville, Ontario
N0L 2N0

Or Email
info@quadcounty.ca

Closing date: August 25, 2020

WASTE CONNECTION OF CANADA

Garbage & Recycling Collection Schedule

September 2020

Monday	Tuesday	Wednesday	Thursday	Friday
3	1 GARBAGE	2 RECYCLING	3	4
7 Labour Day Collection is one day later this week	8	9 GARBAGE	10	11
14	15 GARBAGE	16 RECYCLING	17	18
21	22 GARBAGE	23	24	25
28	29 GARBAGE	30 RECYCLING		

October 2020

Monday	Tuesday	Wednesday	Thursday	Friday
			1	2
5	6 GARBAGE	7	8	9
12 Thanksgiving Day Collection is one day later this week	13	14 GARBAGE	15 RECYCLING	16
19	20 GARBAGE	21	22	23
26	27 GARBAGE	28 RECYCLING	29	30

November 2020

Monday	Tuesday	Wednesday	Thursday	Friday
2	3 GARBAGE	4	5	6
9	10 GARBAGE	11 Remembrance Day RECYCLING	12	13
16	17 GARBAGE	18	19	20
23	24 GARBAGE	25 RECYCLING	26	27
30				

December 2020

Monday	Tuesday	Wednesday	Thursday	Friday
	1 GARBAGE	2	3	4
7	8 GARBAGE	9 RECYCLING	10	11
14	15 GARBAGE	16	17	18
21	22 GARBAGE	23 RECYCLING	24	
28	29 GARBAGE	30	31	

2-STREAM Recycling Guide

2-STREAM recycling means you separate paper products from all other recyclables. Use two containers, black box for fibres (e.g. beverage cartons, paper & boxboard) and blue box for all other acceptable recyclables. Place all shredded paper and excess paper (excluding boxboard/cardboard/cartons) in a clear plastic bag in or beside your black recycling box.

STREAM 1 Fibre Products In Black Box ONLY



Paper Beverage Cartons:
includes milk, juice & Tetra Pak cartons, drink boxes, paper hot beverage paper cups.

DO NOT recycle foil pouches (i.e. Koolaid Jammers), aluminum foil lined containers (e.g. Boost, wine), etc.

Household Paper/Newspaper, Catalogues, Books, and Telephone Books:
includes mail, white & coloured paper, envelopes, hard (remove the cover) and soft cover books, glossy publications, inserts/flyers.

DO NOT recycle waxed, foil, laminated or gift wrap paper, or fast food waxed soft drink cups.

Paper Egg Cartons and Boxboard:
such as cereal, tissue, detergent, cracker and shoe boxes.
Remove liners and flatten.

Cardboard Boxes:
Break down, flatten and tie in bundles no larger than 75 cm x 75 cm x 20 cm (30" x 30" x 8") and place beside black box.
Please remove food residue and liners from pizza boxes.

STREAM 2 Food, Beverage & Liquid Containers In Blue Box ONLY



Glass Bottles and Jars:
Please remove food and rinse.

DO NOT recycle broken glass, drinking glasses, dishes, cups, other ceramics, window glass, light bulbs, mirrors, pottery, glass pots & pans.

Aluminum/Steel Cans Plus Empty Aerosol/Paint Cans:
Please remove food and rinse.

DO NOT recycle coat hangers, pots, needles, batteries and hazardous waste.

Aluminum Foil Containers and Foil:
Pie plates, trays/baking pans and take-out food containers. Please remove/rinse food and flatten.

Plastic Bottles, Jugs and Tubs:
Now accepting more plastic household rigid containers and tubs with numbers ♻️ through ♻️ on the bottom of the container, including clamshells and cleaning product containers.

DO NOT recycle toys, Styrofoam™, plastic wrap and bags, flowertrays, K-cups (Keurig, etc.), used oil containers, and unmarked plastics.

Note: Additional recycling boxes are available free of charge at all municipal centres.

<p>Blue or Black Box Bloopers The following materials DO NOT belong in your Blue or Black Boxes:</p>	<p>Styrofoam™ Containers (foam containers like coffee cups, egg cartons and protective foam packaging)</p>	<p>Plastic Plant Pots and Trays</p>
<p>Foil pouches (i.e. Koolaid Jammers) Aluminum foil lined containers (i.e. wine), etc.</p>	<p>Waxed Boxboard (frozen food packaging, ice cream containers, etc.)</p>	<p>Food, Beverage & Liquid Containers Do not use clear/transparent plastic bags for 2-STREAM recyclables.</p>