



Eelūnaapéewi Lahkéewiit

Wíingu-néewEénda-Lunaapeewáhkiing -Welcome to the land of the Delaware's

Eelūnaapéewi Lahkéewiit Residency Permits:

If you are residing within the Eelūnaapéewi Lahkéewiit territory and are not a registered member of the Eelūnaapéewi Lahkéewiit Nation, it is a requirement to have a valid residency permit.

Failure to do so will result in denied access to programming, community events and community access.

For further information please contact Cathy Stonefish, Executive Assistant/Indian Registry Administrator @519-692-3936.

Should you require some Firewood For:
Sacred Fires or just to keep warm on chilly nights
Please see George Hopkins @ 15036 River Line



News Items Due:

**Monday September 28th, 2020 @
4:00 pm**

Next Publication Distributed:

Wednesday, September 30th, 2020



For more news and information check out our website
www.delawarenation.on.ca



REGISTER FOR
OUR LIBRARY CARD!

SUMMER HOURS

Monday 9:00 am - 1:00 pm

Tuesday 9:00 PM - 1:00 pm

Wednesday 4:00 pm - 7:00 pm

Thursday - 9:00 pm - 1:00 pm

Friday - closed

R.R.#3

Thamesville, Ontario N0P 2K0

Tel. 591-692-3411

Email: Library@Delawarenation.on.ca

Facebook: Delaware Nation Library



REMINDER

Please return or renew overdue library books.

Countdown to Halloween



The Library will be offering up the black and white horror classic movies once a week on Wednesday till the October moon, the Hunter's Moon.

Masks, social distance and hand sanitation is be enforced since Convid is still rampant.

The limit for watching these universal classics is 5 people. Due to the size limitation, please call in at 519-692-3411 to reserve your spot.

Schedule:

Dracula

Frankenstein

Wolfman

The Mummy

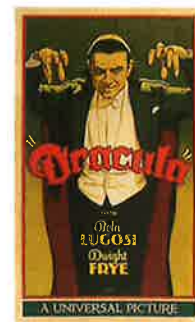
The Invisible Man

Creature from the Black Lagoon

Dracula 1931

The dashing, mysterious Count Dracula (Bela Lugosi), travels to London and takes up residence in an old castle. Soon

Dracula begins to wreak havoc, sucking the blood of young women and turning them into vampires. When he sets his sights on Mina (Helen Chandler), the daughter of a prominent doctor, vampire-hunter Van Helsing (Edward Van Sloan) is enlisted to put a stop to the count's never-ending bloodlust.



Frankenstein 1931

Dr. Henry Frankenstein (Colin Clive) attempts to create life by assembling a creature from body parts of the deceased.

Frankenstein succeeds in animating his monster (Boris Karloff), but, confused and traumatized, it escapes into the countryside and begins to wreak havoc.

Frankenstein searches for the elusive being, and eventually must confront his tormented creation.



Please join the Councils Radio Working Group in researching the
Community Radio Bingo initiative and looking at what all that entails -
this is only a trial run.

Work in Progress

Pilot Project

COMMUNITY RADIO BINGO THE BUCK, 104.3

Sunday, Sept 20, 2020

Starts at 5:00pm

5 games

1 Line \$100 & 2 Lines \$200

1 Line \$100 & 2 Lines \$200

1 Line \$100 & 2 Lines \$200

1 Line \$100 & 2 Lines \$200

Inside Square \$200 & Full Card \$400

**Bingo Cards go on sale Sunday Sept 20, 2020 -
2pm to 5pm at the Training Centre/Radio Station**

Bingo Cards \$5 each for 3-strip

Cash Only Payment

Bingo Winners contact 519-692-4175

Bingo Winners will be announced on the Radio.

Winners will have 30 mins after the bingo has finished to pick up prize.

Or prizes can be picked up at the administration office the following day.

Eelūnaapéewi Lahkèewiit Community Radio Bingo

RULES OF PLAY

1. When you have a Bingo, immediately call 519-692-4175. This is the only line where Bingo calls will be taken. It is your responsibility to stop the game.
2. Eelūnaapéewi Lahkèewiit Radio Working Group is **NOT** responsible for difficulties experienced with inadvertent dialing, busy signals, failure of phone equipment, power surges, power outages and any other telephone difficulties not listed.
3. Should a power outage occur during the bingo game, will wait up to thirty (30) minutes, then resume play. In the event of a mass power shutdown that is not restored in a half hour, the game will resume at 7pm the following evening.
4. Please take into consideration that there is call display and that all prank calls will be reported to the proper authorities.
5. Players are required to verify that they have the correct cards before leaving the bingo outlet.
6. Eelūnaapéewi Lahkèewiit Radio Working Group will not issue refunds.
7. Eelūnaapéewi Lahkèewiit Radio Working Group is not responsible for duplicate cards or any other errors in printing, distribution or production.
8. You must be at least 18 years of age to play.
9. You must be 18 years of age to purchase cards.
10. When playing radio bingo, you must use a Bingo dabber or a permanent ink marker, which allows the printed numbers to be seen. Radio bingo cards are distributed in series and will be stamped. Winning cards that do not correspond to the series being played that week will not be honoured by Eelūnaapéewi Lahkèewiit Radio Working Group.
11. Bingo card sales will be discontinued prior to game time.
12. **DO NOT CUT** your cards or they will be declared invalid.
13. Recaps are done on the Bingo games at ball #30 and #50.
14. When you call in your bingo, you will be asked for the series numbers, located in the "FREE" space on your winning card.
15. All winning bingos will be declared closed by the announcer before the next game starts. Once a Bingo has been declared closed, bingo cannot be claimed for that game. When claiming your prize money, you must bring your winning card to the radio station, **sign the back of the card** and show the proper identification. You will also be required to sign the winner's Book at the station. Winners are required to give permission for their names to be announced on air. Failure to give permission may result in forfeiture of any and all winnings. No remuneration will be given for the use of winner's names or likenesses.
16. Bingo winnings may be picked up at the radio station up to 30 mins after the bingo has closed. Or bingo winnings may be picked up at the administration office the following day.
17. If a player has any questions or concerns regarding BINGO, they are to contact the administration office at 519-692-3936.
18. Multiple winners will receive an equal share rounded off to the next higher dollar.

We will be using the information collected from this pilot project for future community radio initiatives.

Eelūnaapéewi Lahkéewiit Job Posting

Finance Clerk

Finance Department

The Delaware Nation Council is seeking a dedicated, and self-motivated individual who will assist the Financial Controller, to maintain the financial records.

OBJECTIVE

To maintain accurate financial records, and to provide financial information on a timely basis as required by the financial policy.

REPORTING

This position reports and is under the direct supervision of the Delaware Nation Financial Controller.

DUTIES & RESPONSIBILITIES

- Responsible for the accuracy and timeliness of financial information.
- Prepare bi-weekly payroll, with 3 segments of employment, and manual human resource allocations
- Maintain accounts payable record keeping, with manual cheques and electronic transfers
- Assist in reconciling bank, credit card and other General Ledger accounts
- Prepare and record purchase orders
- Prepare bank deposits, issue receipts as needed
- Assist in other accounting related duties.
- Complete online bank bill payments, download statements.
- Promotes and maintains positive relations with all staff and outside agencies.
- Other clerical duties assigned from time to time as required.
- Ability to maintain confidentiality.
- Strong team player required

QUALIFICATIONS

- Accredited college in accounting and/or two years related experience.
- Experience using Sage 300, ACCPAC.
- Strong analytical and organizational skills, with good attention to details.
- Working knowledge of Microsoft Outlook and Excel.
- Excellent verbal and written communications.
- Ability to multi-task.
- Ability to work effectively under the pressure of deadlines.
- Above average attendance, and punctuality is a must.

Job Summary

Location:

Delaware Nation
Administration Office
14760 School House Line
Thamesville, Ontario
N0P 2K0

Term:

Full-time
35 hour per week
8:30 to 4:30

Salary:

TBD

Closing Date:

Extended:

Friday

October 02, 2020

4:00 p.m.

CLOSING DATE FOR APPLICATIONS

Interested candidates, please submit a **Cover Letter, Resume, and 3 references (2 work related & 1 personal)** to:

Director of Operations
Delaware Nation Administration Office
14760 School House Line,
Thamesville, Ontario N0P 2K0
By email: director.operations@delawarenation.on.ca

Marked: CONFIDENTIAL – Finance Clerk

By: Friday, October 02, 2020 @ 4:00 p.m.

Pursuant to Section 16(1) of the Canadian Human Rights Act, Eelūnaapéewi Lahkéewiit gives preference to First Nation applications.

While we sincerely appreciate all applications, only those candidates selected for interview will be contacted.

Please note the selected candidate will be required to submit a current CPIC/Vulnerable Sector Search and consent to a background reference check.

Anushiik to All That Apply.

Just in time for **FALL!**

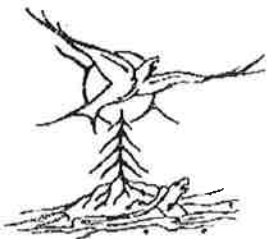
**IT'S AS
EASY AS**

1 METAL
GOES
HERE!

2 GARBAGE
GOES
THERE!



***** Workers will be present for Assistance



Delaware Nation
Public Work Department

**Community Clean -Up
Event From
OCTOBER 5-9 / 2020
9:00am – 4:00pm**

Eelūnaapéewi Lahkéewiit Public Works Department is set to hold another clean-up event.

Mandatory: The workers will only be picking up items that are at the end of their laneways. Because of the **COVID-19 VIRUS.**

**NOBODY WILL BE
ALLOWED TO DROP
OFF ITEMS IN THE
COMPOUND.**

Anúshiik, for your patience and understanding.

**Anúshiik,
PUBLIC WORKS
DEPARTMENT**

Large Appliance Removal

NAME: _____

911#: _____

CONTACT#: _____

☐ Refrigerator (MUST HAVE NO ITEMS INSIDE)

☐ Stove

☐ Freezer (MUST HAVE NO ITEMS INSIDE)

☐ Dishwasher

☐ Air conditioner

☐ Dehumidifiers

☐ Washers

☐ Dryers

☐ BBQ

☐ Other – please specify _____

➤ Please ensure your appliances are outside your home for easy pick-up.

➤ Ensure dogs are tied up or contained, for workers safety.

➤ Pick up times are:

- Between 9:00am-4:00pm

Please Donate
Whenever Possible

If it isn't broke, or worn out, consider donating your unwanted items to local charities, including Goodwill, Value Village, Salvation Army and St. Vincent de Paul

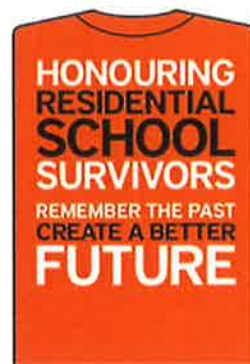
ORANGE T-SHIRT DAY!!!



Pick up Day
Monday, September 28th, 2020

Pick up Time
3:00pm-6:30pm

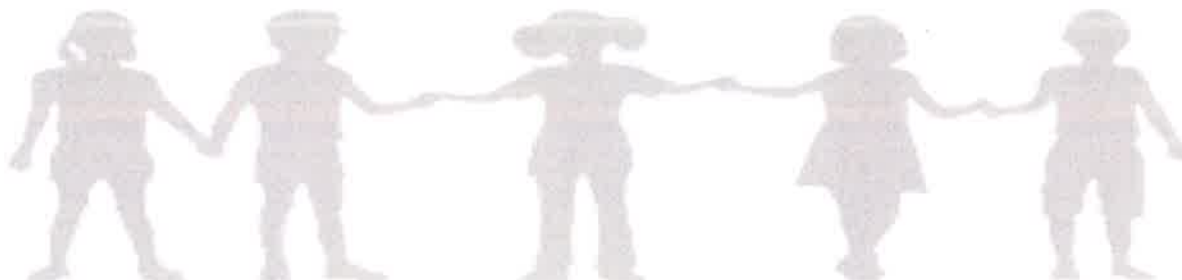
Location
Delaware Nation Health Centre



****Delaware Nation Band member or Residency Permits****

All shirts are to be picked up on the specified day. Please make arrangements ahead of time if you are unable to pick up your shirt.

If you have any questions, please call:
Kelley Noah: Healing & Wellness Coordinator
(519) 692-3969



ORANGE T-SHIRT DAY!!!

Community Supper DRIVE-THRU

Date: Wednesday, September 30th, 2020

Time: 4:00pm-7:00pm

Where: Delaware Nation Community Centre

Please remember to social distance upon arrival and stay in your vehicle.



Orange shirt pick up day: Monday, September 28th, 2020

Diabetes Education Program and Clinical Nutrition



Would you like to speak with a diabetes educator nurse and/or a dietician? You may speak to them over the phone or if you would like to see them in person, you must book an appt. and go directly to their office.

To book, simply call (519) 693-6502

FCHS Middlesex
Hospital Alliance **FOUNDATION**

FOUR COUNTIES HEALTH SERVICES FOUNDATION
R.R. 3, 1824 Concession Drive, Newbury, Ontario N0L 1Z0



FOOD BANK

THURSDAY, OCTOBER 8, 2020

1:30PM - 4:00PM

**DELAWARE NATION
COMMUNITY CENTRE**

*****JUST A REMINDER - PLEASE
BRING YOUR GROCERY BAGS AND
MUST BE PICKED UP ON
THURSDAY****

*****PLEASE CALL AT 519-692-3969 IF
YOU HAVE ANY QUESTIONS *****



GOLF INFORMATION LEAGUE

**Please arrive 20 minutes prior to your
tee time**

To book a tee time:

Text: 519-495-3432

Call: 519-693-4921

Email: wgc.tee@gmail.com

****Please note the last day to golf is October 8, 2020****

****Just a reminder- If you did not register for the golf
league than the golf fees are at your own cost****

THIS IS A COMMUNITY/FAMILY EVENT

PLEASE BE RESPONSIBLE

1 855 554 HEAL

Talk  Healing

TALK • TEXT • CHAT



**Free, confidential help, advice
and support for Indigenous
women, by Indigenous women**



Call or text us at **1-855-554-4325**



Or visit ***Talk4Healing.com*** today



Medicine Wheel

12 step Journey

ZOOM MEETING



WHEN

TUESDAYS

AT 7:00PM

WHERE

ONLINE

VIA ZOOM

CONTACT

AMANDA FRASER

FOR LOGIN ID AND PASSWORD

519-318-3914

AFRASER@ATLOHSA.COM

FORMAT

**SHARING &
DISCUSSING**

MEDICINE WHEEL ONLINE MEETING

MEETING ID: 631-480-2865

PASSWORD: 123

TIME: 7pm on Tuesdays

Option 1: Connect using the Zoom Website or App

<http://us02web.zoom.us/j/6314802865>

Option 2: Connect by dialing one of the following Canadian phone #'s:

+1 647 374 4685

+1 647 558-0588

For more information please contact Kelley Noah, Healing and Wellness Coordinator,
(519) 692-3969



Norma Logan
Eelünaapéewi Lahkéewiit
Community Health Representative
519-692-3969
nlogan@xplornet.com

HOW TO WASH HANDS



WATER AND SOAP



PALM TO PALM



BETWEEN FINGERS



FOCUS ON THUMBS



BACK OF HANDS



FOCUS ON WRISTS

STOP THE SPREAD

Wash your hands thoroughly



Use soap and water



Rub soap all over
your hands and wrist
for at least 20 seconds



Rinse your hands
under running water



Dry hands with
paper towel or dryer

Cover your cough and sneeze



Cover your mouth and
nose with a tissue



Dispose of your
used tissue



If you don't have
a tissue, cough or
sneeze into your
upper sleeve or elbow,
NOT YOUR HANDS



Wash your hands
with soap and dry
thoroughly with a
disposable paper
towel or hand dryer

Norma Logan

Eelünaapéewi Lahkéewiit

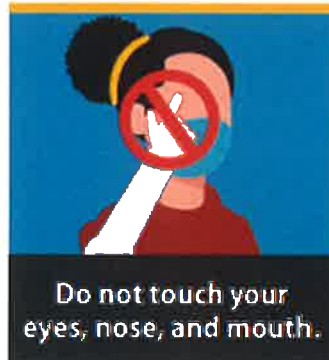
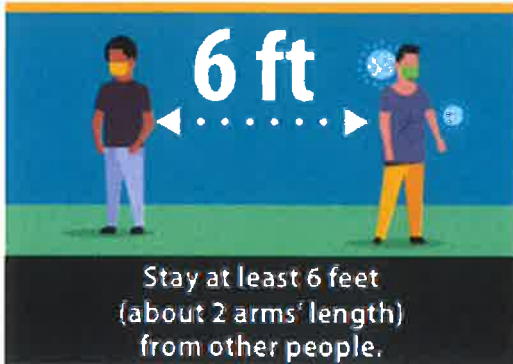
Community Health Representative

P: 519-692-3969

NLogan@xplornet.com

Stop the Spread of Germs

Help prevent the spread of respiratory diseases like COVID-19.



cdc.gov/coronavirus

Norma Logan

Eelünaapéewi Lahkéewiit

Community Health Representative

P: 519-692-3969

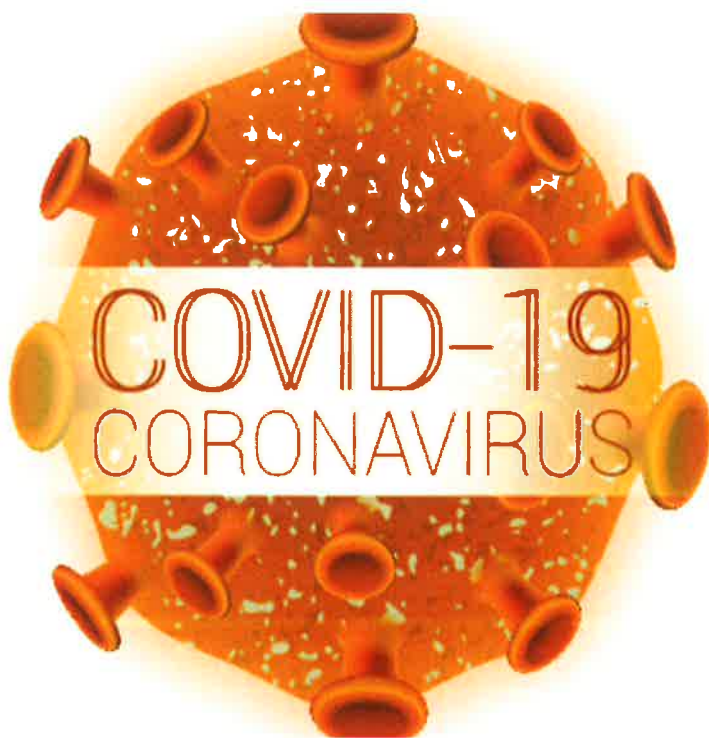
NLogan@xplornet.com



**Eelūnaapéwi Lahkéewiit
HEALTH CENTRE
Tel 519-692-3969**

PRENATAL/ POSTNATAL VOUCHERS

Available at the health centre for expecting mothers or mothers with infants up to 1 year of age that are breastfeeding and reside here in the community



**Eelūnaapéwi Lahkéewiit
HEALTH CENTRE
Tel 519-692-3969**

COVID TESTING

Available at the Health Centre. Please call 519-692-3969. For more information



Fall Walking Program Update

We completed our second hand in! Two More Weeks left on our 6 Week Fall Walking Program!

13 Teams turned in Sheets! Here are your times!

1. **Make Walking Great Again** – 757 mins – 12.61 hours
2. **Mbumsi** – 4023 mins – 67.05 hours
3. **Young and the Breathless** – 1150 mins – 19.16 hours
4. **The Masked Amigos** – 4445 mins – 74.08 hours
5. **WAP (Walking All Paces)** – 5377 mins – 89.61 hours
6. **Holey Walkamolies** – 2295 mins – 38.25 hours
7. **Walk Hard** – 2940 mins – 49 hours
8. **Sole Sisters** – 1170 mins – 19.5 hours
9. **Wawtamooxwehtiit** – 1920 mins – 32 hours
10. **Scrambled Legs** – 3322 mins – 55.36 hours
11. **Bucktown Eagles** – 3030 mins – 50.5 hours
12. **Wiilawooxwehtiit** – 635 mins – 10.58 hours
13. **Hopkins** – 354 mins – 5.9 hours

Time sure does fly while we walking and having fun! We are on our last two weeks of the program! I do appreciate everyone's participation. Happy trails and looking forward to your new times at the 6-week hand in! **September 28, 2020** is the next hand in! Incentives will only be handed out to the ones that turn their sheet in on time!

Walk and Stay Safe!

Norma Logan

CHR

P: 519-692-3969

NLogan@xplornet.com

Eelūnaapéewi Lahkéewiit Health Centre





6 Week Walking Program Calendar

Team Name _____

Start Date _____ Event Time _____

Team Players	Monday	Tuesday	Wednesday	Thursday	Friday	Saturday	Sunday

Eelūnaapéewi Lahkéewiit Health Centre

Norma Logan
CHR

Any questions or need another Calendar call:
519-692-3969





6 Week Walking Program Calendar

Team Name _____

Start Date _____ Event Time _____

Team Players	Monday	Tuesday	Wednesday	Thursday	Friday	Saturday	Sunday

Eelūnaapéewi Lahkéewiit Health Centre

Norma Logan
CHR

Any questions or need another Calendar call:
519-692-3969



Media Release

September 9, 2020

Recruitment for Board of Health members underway

CK Public Health is actively recruiting for three Board positions. Two of these are citizen members of the Board of Health, to begin their four-year term on January 1, 2021. As well, an Indigenous representative is being recruited to complete the current term, starting January 1, 2021 and ending December 31, 2022.

The Board of Health is a governing board that monitors operations within CK Public Health. The Board of Health meets at 11:00 A.M. the third Wednesday of each month, and includes representation from elected officials, Indigenous partners, and community members.

The role of the Board of Health is to:

- Appoint a full-time Medical Officer of Health;
- Hire staff to carry out the functions of the board as outlined within the Health Protection and Promotion Act;
- Provide the municipality with a yearly budget notice;
- Have a strong commitment to and understanding of public health programs;
- Attend board meetings, actively participate, and serve as officers;
- Serve in a volunteer capacity without regard for remuneration or profit;
- Identify and declare any conflicts of interest; and
- Represent the health unit in the community.

To apply, [fill out an application form](#) on our website. Alternative formats of the application will be provided upon request. **The deadline to apply is Friday, September 25 at 4:30 P.M.**

-30-

Media Contact:

April Rietdyk
General Manager, Community Human Services
519.352.7270, ext. 2100
aprilr@chatham-kent.ca

This communication is subject to the Municipal Freedom of Information and Protection of Privacy Act (Ontario) and/or Personal Health Information Protection Act (Ontario). This communication may be confidential. Unauthorized use is strictly prohibited. If you are not the intended recipient, please delete this email immediately.